

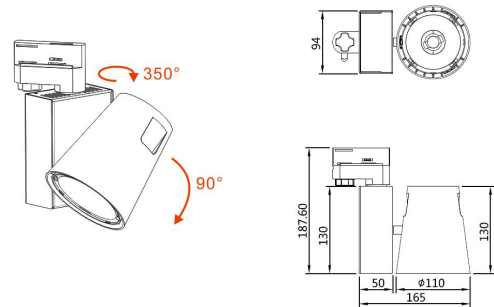
iTrack Vario Series

TL31-20W

Reflector

Technical Parameters:

Name	Parameters
Light source:	COB
Input Voltage:	AC220~240V 50/60Hz
LED Current:	500mA, 35-37V
Rated life:	>50,000 hours
Operating temperature:	-20°C~40°C
Storage temperature:	-30°C~60°C
Certificate:	CE/RoHS
Weight:	1.25KG



Ordering Information:

○ White ● Black

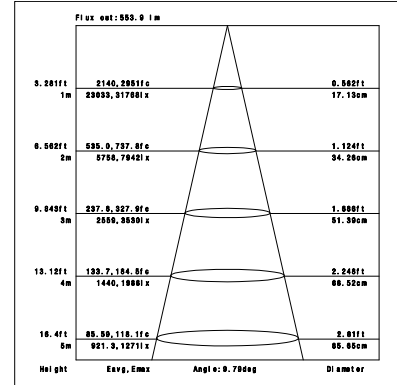
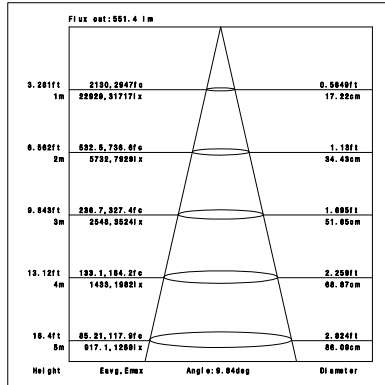
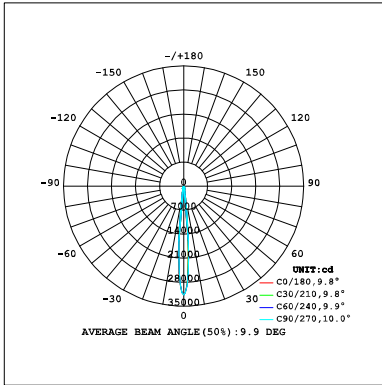
Power	CRI	Beam Angle	Luminous	CCT	Housing	Part Number	
20W	>80	▲ 10°	2040 lm	3000K	○	TL314-20W-830-W-10	
					●	TL314-20W-830-B-10	
			2050 lm	4000K	○	TL314-20W-840-W-10	
					●	TL314-20W-840-B-10	
		▲ 20°	2060 lm	3000K	○	TL314-20W-830-W-20	
					●	TL314-20W-830-B-20	
			2060 lm	4000K	○	TL314-20W-840-W-20	
					●	TL314-20W-840-B-20	
		▲ 38°	2050 lm	3000K	○	TL314-20W-830-W-38	
					●	TL314-20W-830-B-38	
			2040 lm	4000K	○	TL314-20W-840-W-38	
					●	TL314-20W-840-B-38	
	>90	▲ 10°	1730 lm	3000K	○	TL314-20W-930-W-10	
					●	TL314-20W-930-B-10	
			1870 lm	4000K	○	TL314-20W-940-W-10	
					●	TL314-20W-940-B-10	
			▲ 20°	1750 lm	3000K	○	TL314-20W-930-W-20
						●	TL314-20W-930-B-20
		1900 lm	4000K	○	TL314-20W-940-W-20		
				●	TL314-20W-940-B-20		
		▲ 38°	1750 lm	3000K	○	TL314-20W-930-W-38	
					●	TL314-20W-930-B-38	
			1890 lm	4000K	○	TL314-20W-940-W-38	
					●	TL314-20W-940-B-38	

Technical Data test pattern

CRI80 10°

3000K

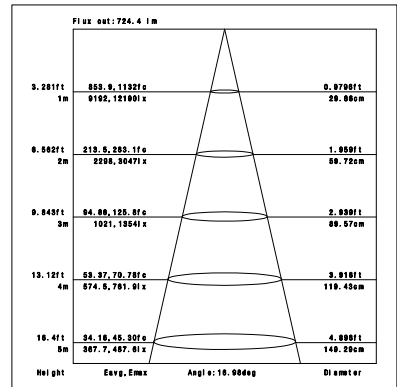
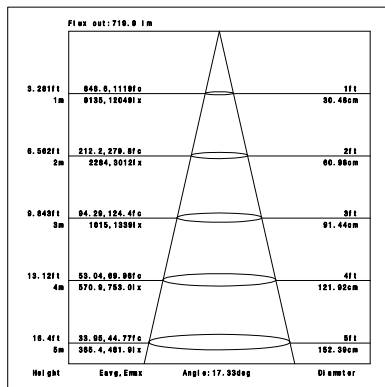
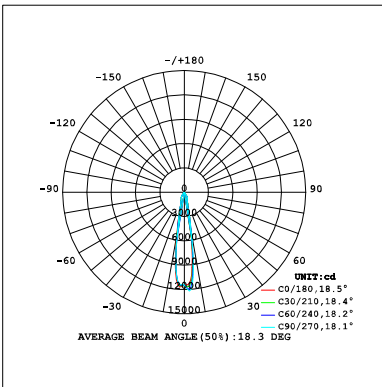
4000K



CRI80 20°

3000K

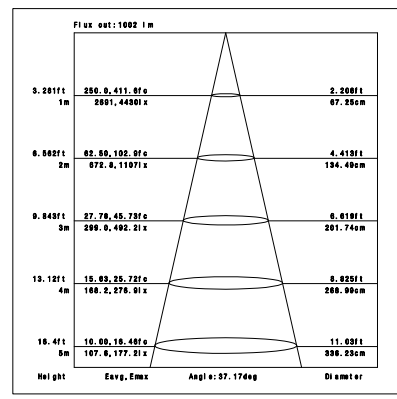
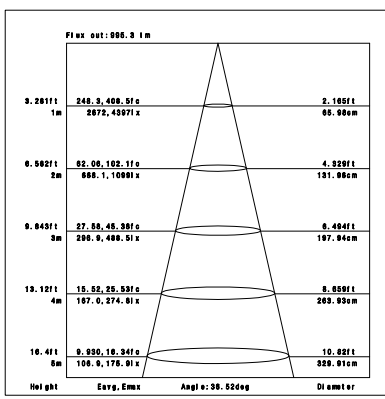
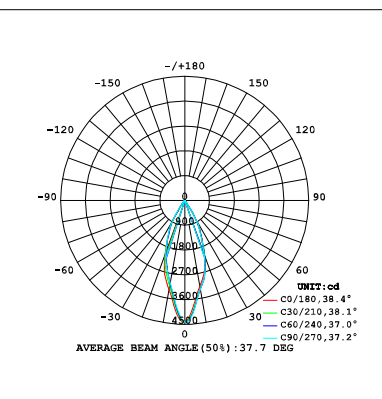
4000K



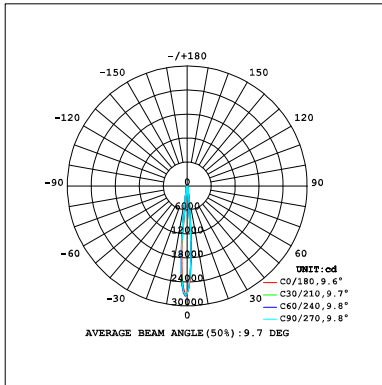
CRI80 38°

3000K

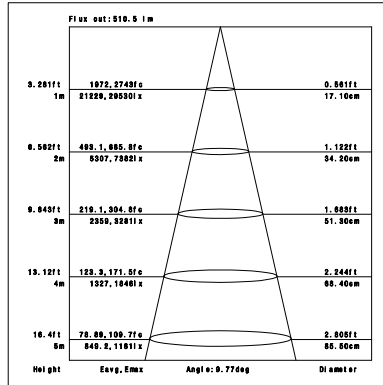
4000K



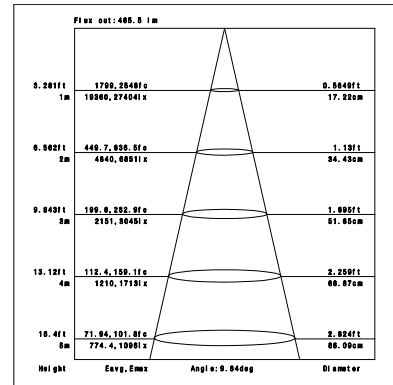
CRI90 10°



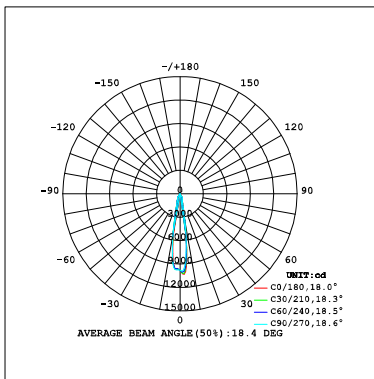
3000K



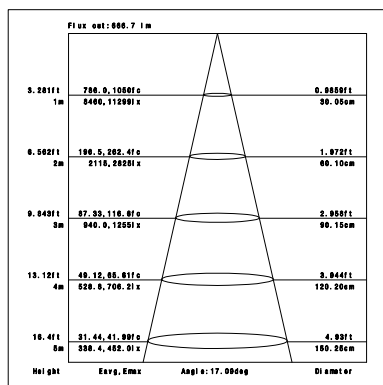
4000K



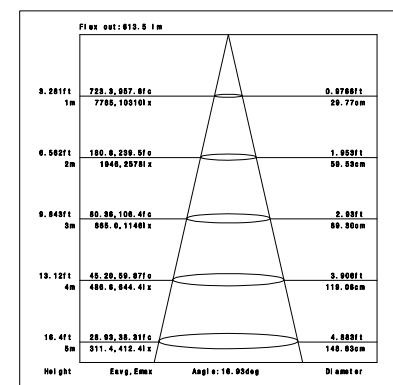
CRI90 20°



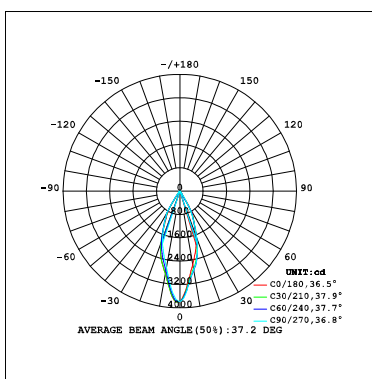
3000K



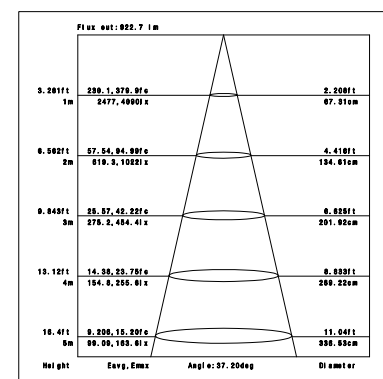
4000K



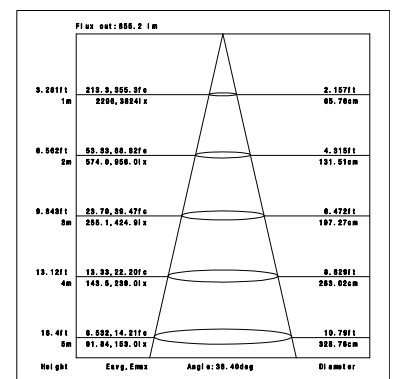
CRI90 38°



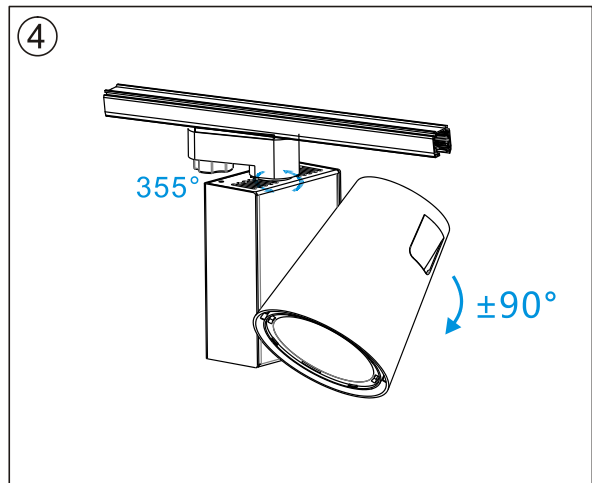
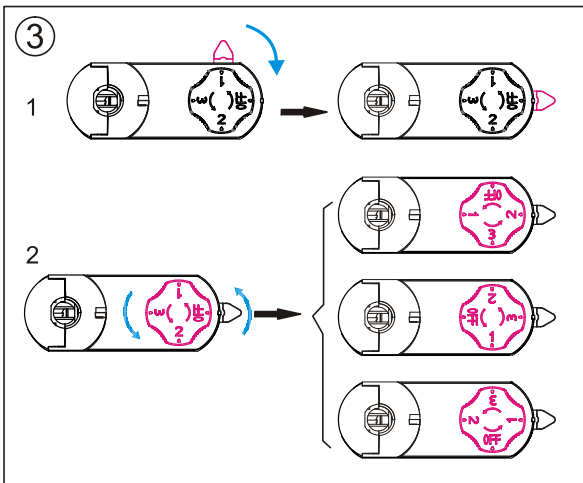
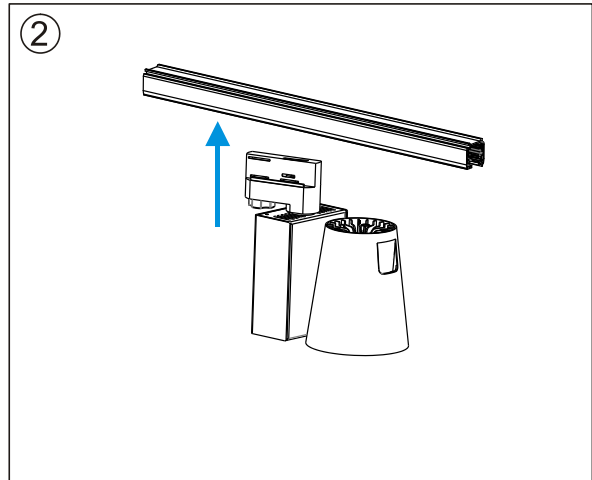
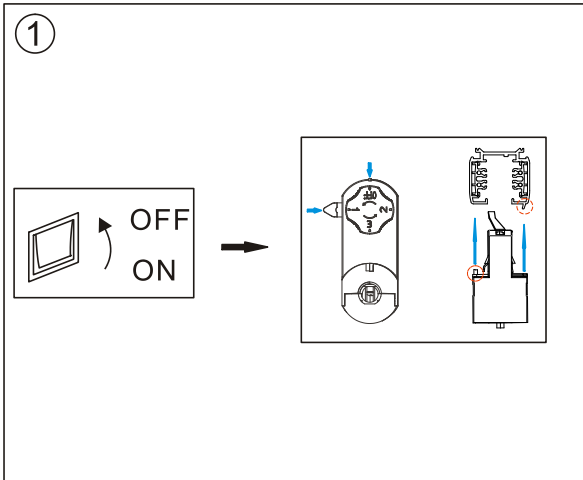
3000K



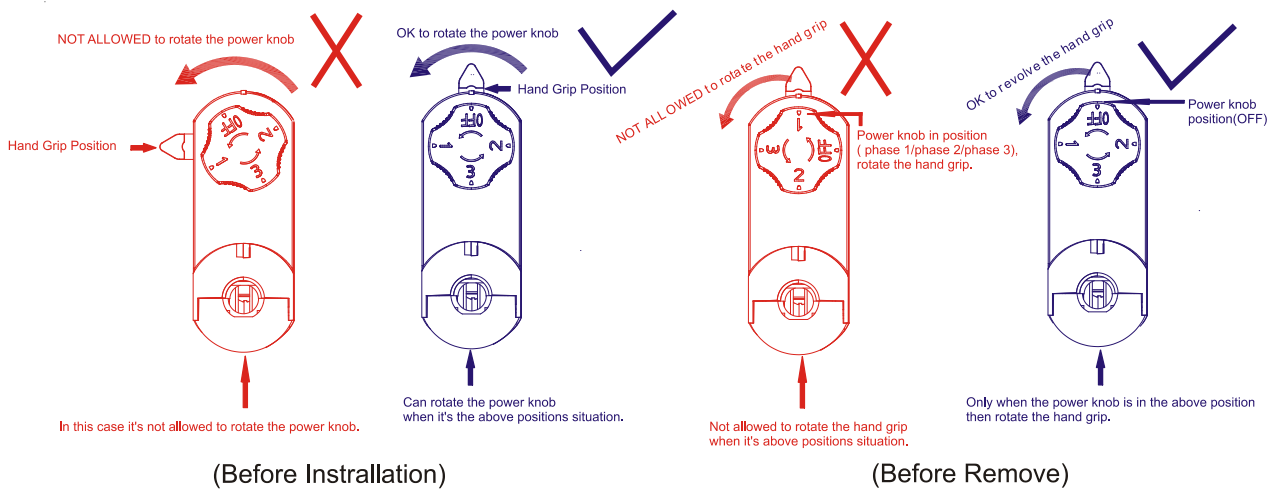
4000K



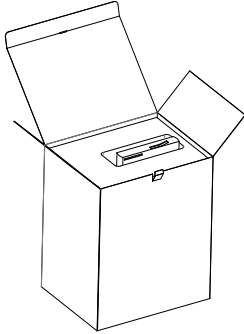
Installation instruction



Cautions



Packaging:

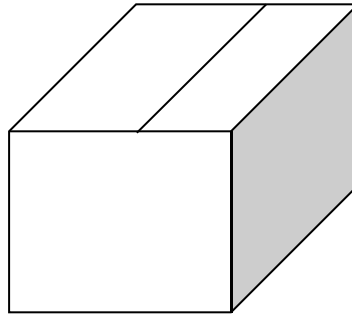


Box

L165*W130*H200mm

1pc/box

GW: 1.55kg/box



Outer carton

L545Xw355xH430mm

16pcs/CTN

GW: 26kg/carton

Product naming system

