

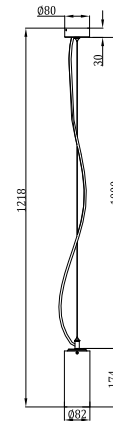
Pro Series

SD052-20W

Optical lens

Technical Parameters:

Name	Parameters
Light source:	COB
Input Voltage:	AC220~240V 50/60Hz
LED Current:	500mA, 35-37V
Rated life:	>50,000 hours
Operating temperature:	-20°C~40°C
Storage temperature:	-30°C~60°C
Certificate:	CE/RoHS
Dimmability:	NON-Dimmable
Weight:	0.65KG



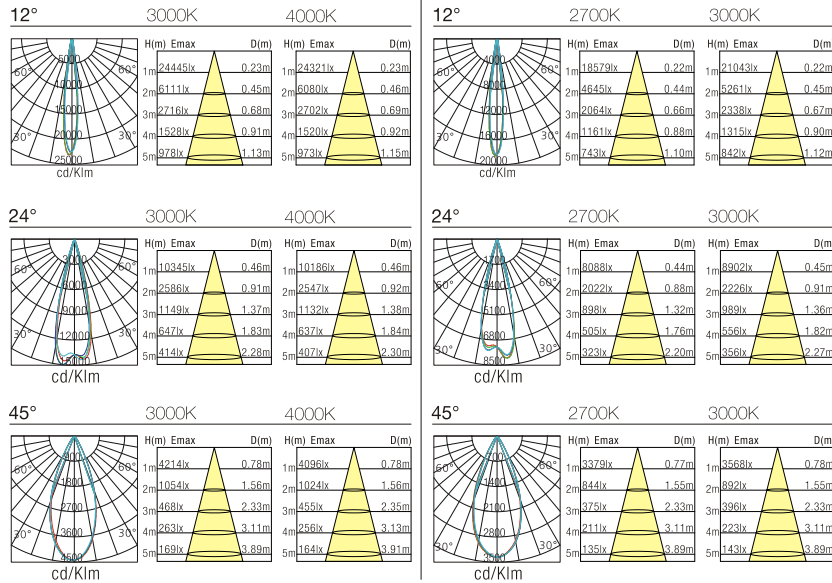
Ordering Information:

○ White ● Black

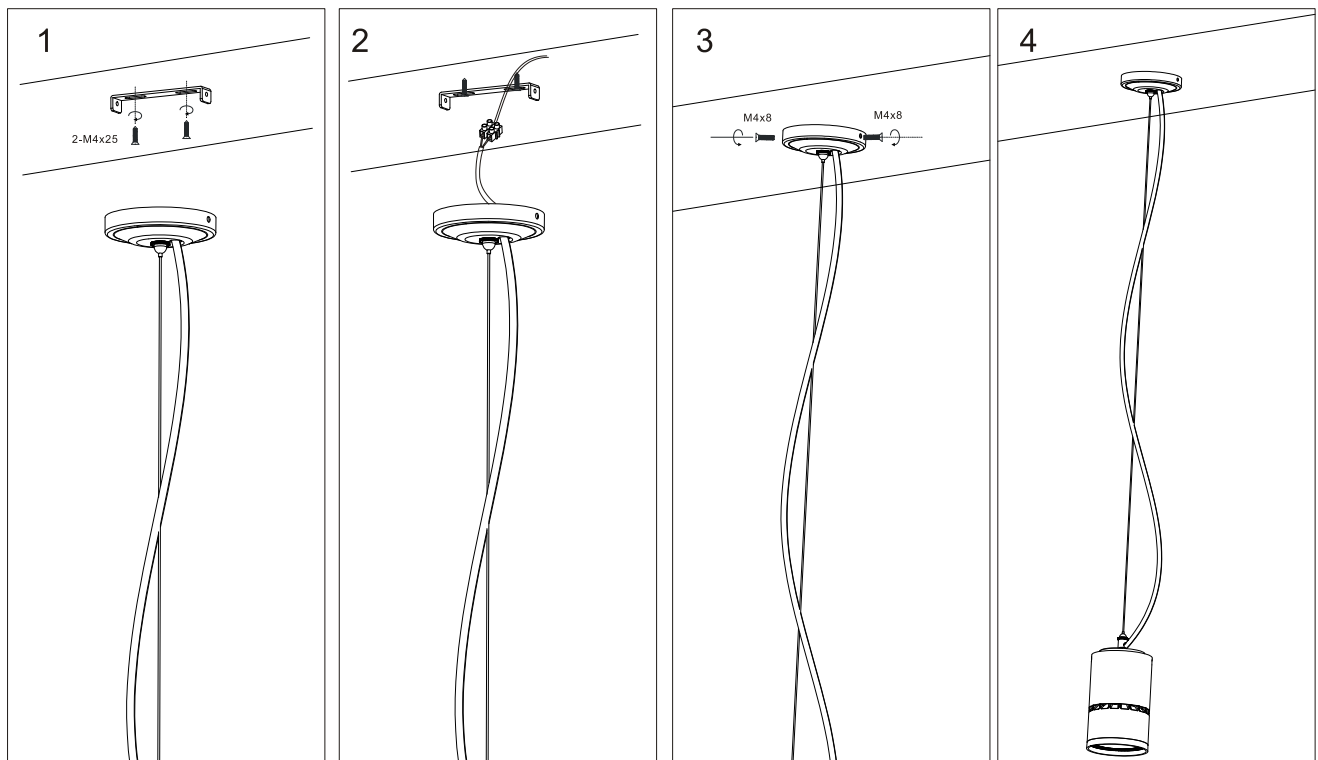
Power	CRI	Beam Angle	Luminous	CCT	Housing	Part Number
20W	>80	▲ 12°	2080 lm	3000K	○	SD052-20W-830-W-12
					●	SD052-20W-830-B-12
		2118 lm	4000K	○	SD052-20W-840-W-12	
				●	SD052-20W-840-B-12	
		▲ 24°	2270 lm	3000K	○	SD052-20W-830-W-24
					●	SD052-20W-830-B-24
	2313 lm	4000K	○	SD052-20W-840-W-24		
			●	SD052-20W-840-B-24		
	▲ 45°	2290 lm	3000K	○	SD052-20W-830-W-45	
				●	SD052-20W-830-B-45	
	2269 lm	4000K	○	SD052-20W-840-W-45		
			●	SD052-20W-840-B-45		
>90	▲ 12°		1772 lm	3000K	○	SD052-20W-930-W-12
					●	SD052-20W-930-B-12
		1870 lm	4000K	○	SD052-20W-940-W-12	
				●	SD052-20W-940-B-12	
		▲ 24°	1921 lm	3000K	○	SD052-20W-930-W-24
					●	SD052-20W-930-B-24
	1940 lm	4000K	○	SD052-20W-940-W-24		
			●	SD052-20W-940-B-24		
	▲ 45°	1926 lm	3000K	○	SD052-20W-930-W-45	
				●	SD052-20W-930-B-45	
	1960 lm	4000K	○	SD052-20W-940-W-45		
			●	SD052-20W-940-B-45		

Technical Data test pattern

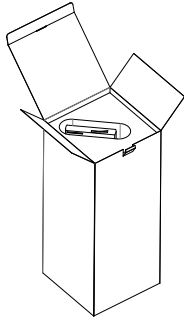
20W	CRI>80			Luminaire		CRI>90		Luminaire	
	LED			20W		LED		20W	
Power	12.2W			20W		12.2W		20W	
Current	360mA			500mA		360mA		500mA	
Luminous Flux	1783lm	1830lm	1850lm	2290lm	2313lm	1528lm	1552lm	1820lm	1926lm
CCT	3000K	4000K	5000K	3000K	4000K	3000K	4000K	2700K	3000K
Color tolerance	3 SDCM					3 SDCM			
Service life	>50000Hrs			>50000Hrs		>50000Hrs		>50000Hrs	
Beam Angle	120°			12°/20°/38°		120°		12°/20°/38°	
Typical Efficiency				86%				86%	
Efficacy(lm/W)	146	150	151	114.5	116	125	127	91	96



Installation instruction

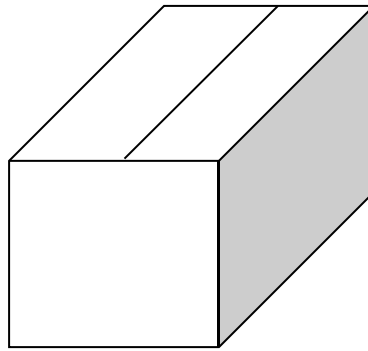


Packaging:



Box

L80*W80*H290mm
 1pc/box
 GW: 0.80kg/box



Outer carton

L515xW415xH305mm
 20pcs/CTN
 GW: 18kg/carton

Product Nomenclature

SD (X) XX X (H) - X - X XX - X - XX

