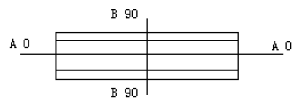
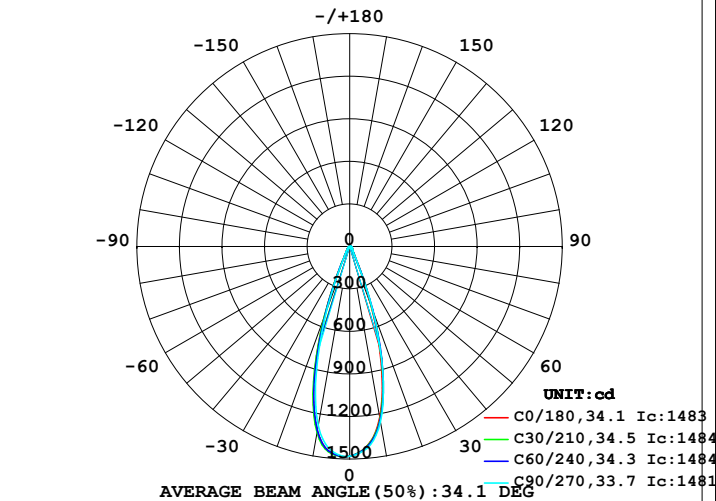


## LUMINAIRE PHOTOMETRIC TEST REPORT

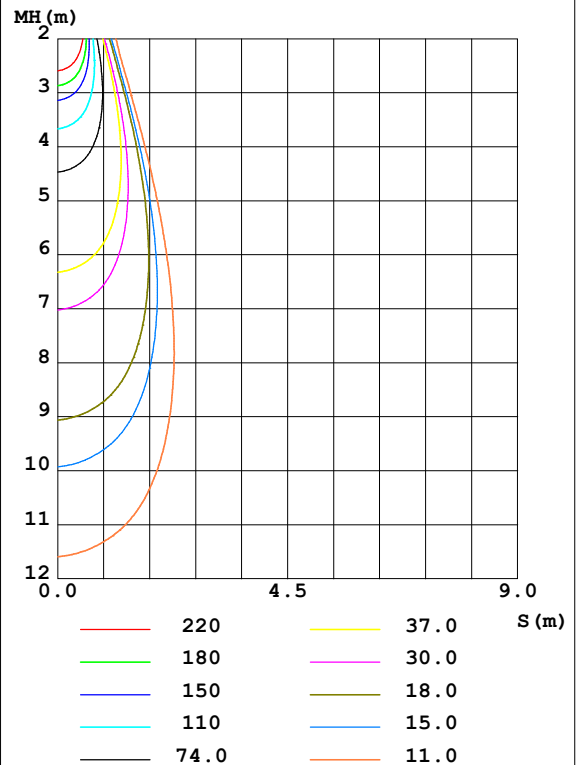
Test:U:225.1V I:0.0310A P:6.280W PF:0.8830 Freq:50.00Hz Lamp Flux:523.795x1 lm					
NAME: ALSP35-6G30-F			TYPE:		WEIGHT:
SPEC.:			DIM.:		SERIAL No.:
MFR.:			SUR.:28		Shielding Angle:

DATA OF LAMP		PHOTOMETRIC DATA				Eff: 83.41 lm/W
MODEL	3000K CRI90	I <sub>max</sub> (cd)	1484	S/MH (C0/180)	0.54	
NOMINAL POWER (W)	6	LOR (%)	100.0	S/MH (C90/270)	0.52	
RATED VOLTAGE (V)	226	TOTAL FLUX (lm)	523.79	η UP, DN (C0-180)	0.0, 49.9	
NOMINAL FLUX (lm)	523.795	CIE CLASS	DIRECT	η UP, DN (C180-360)	0.0, 50.1	
LAMPS INSIDE	1	η up (%)	0.0	CIBSE SHR NOM	0.50	
TEST VOLTAGE (V)	225.1	η down (%)	100.0	CIBSE SHR MAX	0.55	

LUMINOUS INTENSITY DISTRIBUTION DIAGRAM



C0 PLANE ISOLUX DIAGRAM (UNIT:lx)



C Range: 0 - 360DEG  
 C Interval: 15.0DEG  
 Test Speed: HIGH  
 Temperature: 25.3DEG  
 Operators: AE  
 Test Date: 2020-06-16

γ Range: 0 - 90DEG  
 γ Interval: 1.0DEG  
 Test System: EVERFINE GO-2000B\_V1 SYSTEM V2.0.362  
 Humidity: 65.0%  
 Test Distance: 7.240m [K=1.0000]  
 Remarks:

## ZONAL FLUX DIAGRAM

ZONAL FLUX DIAGRAM:

$\gamma$	C0	C45	C90	C135	C180	C225	C270	C315	$\gamma$	$\Phi$ zone	$\Phi$ total	%lum, lamp
10	1222	1246	1255	1284	1319	1321	1283	1228	0- 10	132.1	132.1	25.2,25.2
20	437.8	484.5	471.7	501.3	520.3	493.7	462.4	418.9	10- 20	242.3	374.4	71.5,71.5
30	64.44	64.33	62.79	64.47	65.67	65.98	67.50	65.40	20- 30	86.01	460.5	87.9,87.9
40	28.27	27.55	28.55	29.49	28.10	26.86	27.77	29.07	30- 40	26.64	487.1	93,93
50	16.36	15.97	16.29	17.00	16.31	15.71	15.92	17.04	40- 50	16.20	503.3	96.1,96.1
60	9.592	9.501	9.648	10.15	9.972	9.285	9.242	9.583	50- 60	11.62	514.9	98.3,98.3
70	3.853	3.960	4.054	4.105	3.954	3.770	3.779	3.790	60- 70	6.407	521.3	99.5,99.5
80	0.7385	0.7609	0.8006	0.7846	0.6943	0.6514	0.6158	0.6396	70- 80	2.311	523.6	100,100
90	0.0548	0.0587	0.0704	0.0548	0	0	0	0	80- 90	0.1600	523.8	100,100
100									90-100			
110									100-110			
120									110-120			
130									120-130			
140									130-140			
150									140-150			
160									150-160			
170									160-170			
180									170-180			
DEG	LUMINOUS INTENSITY:cd									UNIT:lm		

Conical surface Flux(90deg): 495.93 lm

%lum = 94.7%

%lamp = 94.7%

Conical surface Flux(120deg): 514.92 lm

%lum = 98.3%

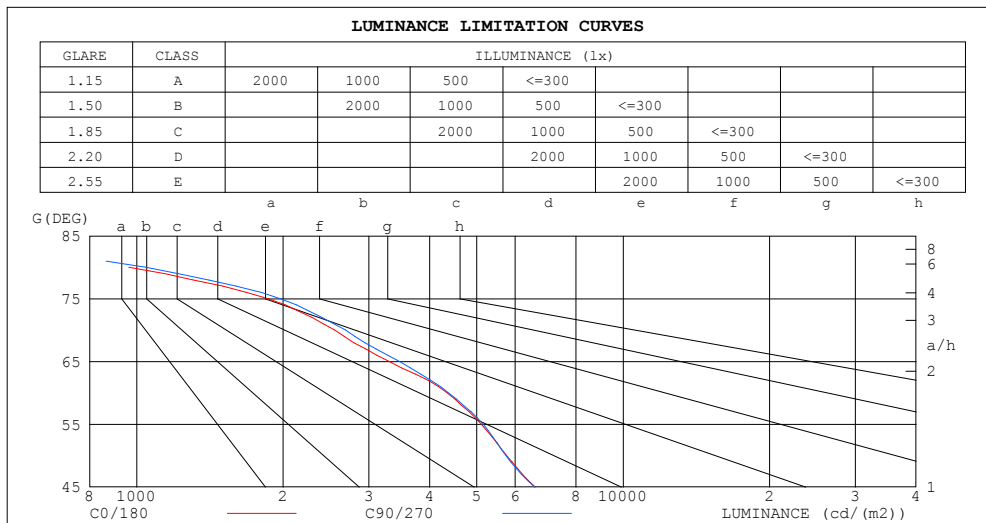
%lamp = 98.3%

C Range: 0 - 360DEG  
 C Interval: 15.0DEG  
 Test Speed: HIGH  
 Temperature:25.3DEG  
 Operators:AE  
 Test Date:2020-06-16

$\gamma$  Range: 0 - 90DEG  
 $\gamma$  Interval: 1.0DEG  
 Test System:EVERFINE GO-2000B\_V1 SYSTEM V2.0.362  
 Humidity:65.0%  
 Test Distance:7.240m [K=1.0000]  
 Remarks:

## LUMINANCE LIMITATION CURVES

Test:U:225.1V I:0.0310A P:6.280W PF:0.8830 Freq:50.00Hz Lamp Flux:523.795x1 lm		
NAME: ALSP35-6G30-F	TYPE:	WEIGHT:
SPEC.:	DIM.:	SERIAL No.:
MFR.:	SUR.:28	Shielding Angle:



LUMINANCE cd/(m2)		
G (DEG)	C0/180	C90/270
85	224	254
80	963	1044
75	1860	1969
70	2550	2685
65	3301	3464
60	4343	4371
55	5107	5155
50	5760	5741
45	6600	6580

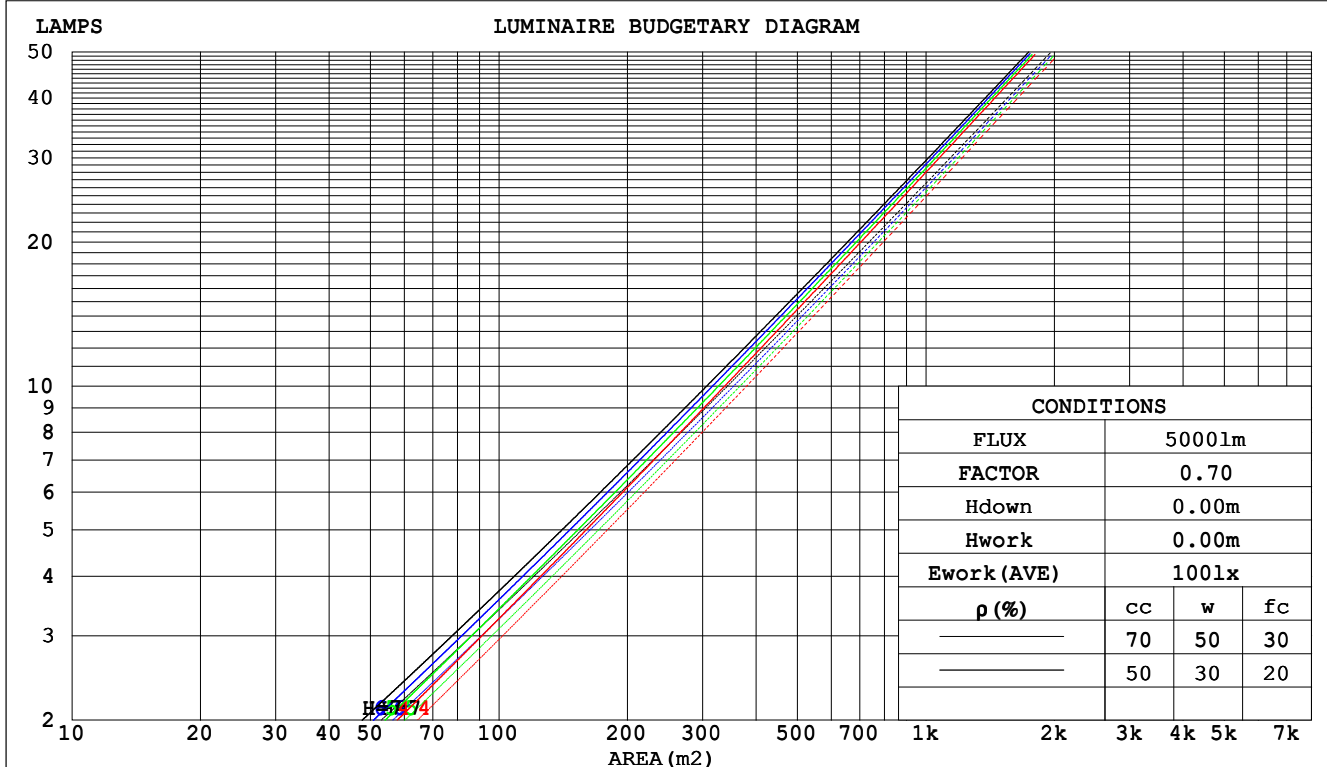
C Range: 0 - 360DEG  
C Interval: 15.0DEG  
Test Speed: HIGH  
Temperature:25.3DEG  
Operators:AE  
Test Date:2020-06-16

$\gamma$  Range: 0 - 90DEG  
 $\gamma$  Interval: 1.0DEG  
Test System:EVERFINE GO-2000B\_V1 SYSTEM V2.0.362  
Humidity:65.0%  
Test Distance:7.240m [K=1.0000]  
Remarks:

## CU AND LUMINAIRE BUDGETARY ESTIMATE DIAGRAM

Test:U:225.1V I:0.0310A P:6.280W PF:0.8830 Freq:50.00Hz Lamp Flux:523.795x1 lm		
NAME: ALSP35-6G30-F	TYPE:	WEIGHT:
SPEC.:	DIM.:	SERIAL No.:
MFR.:	SUR.:28	Shielding Angle:

pcc	80%			70%			50%			30%			10%			0
pw	50%	30%	10%	50%	30%	10%	50%	30%	10%	50%	30%	10%	50%	30%	10%	0
pfc	20%			20%			20%			20%			20%			0
RCR	RCR:Room Cavity Ratio						Coefficients of Utilization(CU)									
0.0	1.19	1.19	1.19	1.16	1.16	1.16	1.11	1.11	1.11	1.06	1.06	1.06	1.02	1.02	1.02	1.00
1.0	1.12	1.10	1.08	1.10	1.08	1.06	1.06	1.04	1.03	1.02	1.01	.00	.99	.98	.97	.95
2.0	1.06	1.02	.99	1.04	1.01	.98	1.01	.98	.96	.98	.96	.94	.95	.94	.92	.91
3.0	1.00	.96	.93	.99	.95	.92	.96	.93	.90	.94	.91	.89	.92	.90	.88	.86
4.0	.95	.91	.87	.94	.90	.87	.92	.89	.86	.90	.87	.85	.89	.86	.84	.83
5.0	.91	.86	.83	.90	.86	.82	.88	.85	.82	.87	.84	.81	.85	.83	.80	.79
6.0	.87	.82	.79	.86	.82	.79	.85	.81	.78	.84	.80	.78	.83	.80	.77	.76
7.0	.84	.79	.76	.83	.79	.75	.82	.78	.75	.81	.77	.75	.80	.77	.74	.73
8.0	.81	.76	.73	.80	.76	.72	.79	.75	.72	.78	.75	.72	.77	.74	.72	.71
9.0	.78	.73	.70	.77	.73	.70	.76	.72	.70	.76	.72	.69	.75	.72	.69	.68
10.0	.75	.71	.67	.75	.70	.67	.74	.70	.67	.73	.70	.67	.73	.69	.67	.66



C Range: 0 - 360DEG  
 C Interval: 15.0DEG  
 Test Speed: HIGH  
 Temperature:25.3DEG  
 Operators:AE  
 Test Date:2020-06-16

γ Range: 0 - 90DEG  
 γ Interval: 1.0DEG  
 Test System:EVERFINE GO-2000B\_V1 SYSTEM V2.0.362  
 Humidity:65.0%  
 Test Distance:7.240m [K=1.0000]  
 Remarks:

### WEC AND CCEC

Test:U:225.1V I:0.0310A P:6.280W PF:0.8830 Freq:50.00Hz Lamp Flux:523.795x1 lm					
NAME: ALSP35-6G30-F			TYPE:		WEIGHT:
SPEC.:			DIM.:		SERIAL No.:
MFR.:			SUR.:28		Shielding Angle:

pcc	80%			70%			50%			30%			10%			0
pw	50%	30%	10%	50%	30%	10%	50%	30%	10%	50%	30%	10%	50%	30%	10%	0
pfc	20%			20%			20%			20%			20%			0
RCR	RCR:Room Cavity Ratio						Wall Exitance Coefficients(WEC)									
0.0																
1.0	.156	.088	.028	.149	.085	.027	.136	.078	.025	.125	.072	.023	.114	.066	.021	
2.0	.146	.080	.025	.140	.077	.024	.130	.072	.022	.120	.068	.021	.112	.063	.020	
3.0	.137	.073	.022	.132	.071	.021	.123	.067	.020	.115	.063	.019	.108	.060	.018	
4.0	.129	.067	.020	.125	.065	.019	.117	.062	.019	.110	.059	.018	.104	.056	.017	
5.0	.121	.062	.018	.118	.060	.018	.111	.058	.017	.105	.056	.017	.100	.053	.016	
6.0	.115	.057	.016	.112	.056	.016	.106	.054	.016	.101	.052	.015	.096	.051	.015	
7.0	.109	.054	.015	.106	.053	.015	.101	.051	.015	.097	.050	.014	.093	.048	.014	
8.0	.103	.051	.014	.101	.050	.014	.097	.048	.014	.093	.047	.014	.089	.046	.013	
9.0	.099	.048	.013	.097	.047	.013	.093	.046	.013	.089	.045	.013	.086	.044	.013	
10.0	.094	.045	.013	.093	.045	.012	.089	.044	.012	.086	.043	.012	.083	.042	.012	

pcc	80%			70%			50%			30%			10%			0
pw	50%	30%	10%	50%	30%	10%	50%	30%	10%	50%	30%	10%	50%	30%	10%	0
pfc	20%			20%			20%			20%			20%			0
RCR	RCR:Room Cavity Ratio						Ceiling Cavity Exitance Coefficients(CCEC)									
0.0	.190	.190	.190	.163	.163	.163	.111	.111	.111	.064	.064	.064	.020	.020	.020	
1.0	.170	.158	.147	.145	.135	.126	.099	.093	.087	.057	.054	.051	.018	.017	.016	
2.0	.153	.133	.116	.131	.114	.100	.090	.079	.070	.052	.046	.041	.017	.015	.013	
3.0	.139	.113	.093	.119	.098	.081	.082	.068	.057	.047	.040	.033	.015	.013	.011	
4.0	.127	.098	.076	.109	.085	.066	.075	.059	.047	.043	.035	.028	.014	.011	.009	
5.0	.117	.086	.063	.101	.075	.055	.069	.052	.039	.040	.031	.023	.013	.010	.008	
6.0	.109	.077	.053	.093	.066	.047	.064	.046	.033	.037	.027	.020	.012	.009	.006	
7.0	.101	.069	.045	.087	.059	.040	.060	.042	.028	.035	.025	.017	.011	.008	.006	
8.0	.095	.062	.039	.082	.054	.034	.057	.038	.024	.033	.022	.014	.011	.007	.005	
9.0	.090	.056	.034	.077	.049	.030	.053	.034	.021	.031	.020	.013	.010	.007	.004	
10.0	.085	.052	.030	.073	.045	.026	.051	.032	.019	.030	.019	.011	.010	.006	.004	

C Range: 0 - 360DEG  
C Interval: 15.0DEG  
Test Speed: HIGH  
Temperature:25.3DEG  
Operators:AE  
Test Date:2020-06-16

γ Range: 0 - 90DEG  
γ Interval: 1.0DEG  
Test System:EVERFINE GO-2000B\_V1 SYSTEM V2.0.362  
Humidity:65.0%  
Test Distance:7.240m [K=1.0000]  
Remarks:

## UGR(Unified Glare Rating) Table

Test:U:225.1V I:0.0310A P:6.280W PF:0.8830 Freq:50.00Hz Lamp Flux:523.795x1 lm											
NAME: ALSP35-6G30-F						TYPE:		WEIGHT:			
SPEC.:						DIM.:		SERIAL No.:			
MFR.:						SUR.:28		Shielding Angle:			
ceiling/cavity	0.7	0.7	0.5	0.5	0.3	0.7	0.7	0.5	0.5	0.3	
walls	0.5	0.3	0.5	0.3	0.3	0.5	0.3	0.5	0.3	0.3	
working plane	0.2	0.2	0.2	0.2	0.2	0.2	0.2	0.2	0.2	0.2	
Room dimensions		Viewed crosswise				Viewed endwise					
x = 2H y = 2H		14.3	15.1	14.5	15.2	15.4	14.5	15.2	14.7	15.4	15.6
	3H	14.9	15.6	15.1	15.8	15.9	15.1	15.8	15.3	16.0	16.1
	4H	15.0	15.7	15.2	15.9	16.1	15.2	15.9	15.5	16.1	16.3
	6H	15.0	15.6	15.3	15.9	16.1	15.2	15.8	15.5	16.1	16.3
	8H	14.9	15.6	15.2	15.8	16.1	15.2	15.8	15.5	16.0	16.3
	12H	14.9	15.5	15.2	15.8	16.0	15.1	15.7	15.4	16.0	16.2
4H	2H	14.6	15.3	14.9	15.5	15.7	14.8	15.4	15.0	15.7	15.9
	3H	15.3	15.9	15.6	16.1	16.4	15.4	16.0	15.8	16.3	16.6
	4H	15.4	16.0	15.8	16.3	16.6	15.6	16.2	16.0	16.5	16.8
	6H	15.5	15.9	15.8	16.3	16.6	15.7	16.1	16.0	16.5	16.8
	8H	15.4	15.9	15.8	16.2	16.6	15.6	16.1	16.0	16.4	16.8
	12H	15.4	15.8	15.8	16.1	16.5	15.6	16.0	16.0	16.3	16.7
8H	4H	15.4	15.9	15.8	16.2	16.6	15.6	16.1	16.0	16.4	16.8
	6H	15.5	15.8	15.9	16.2	16.6	15.7	16.0	16.1	16.4	16.8
	8H	15.4	15.7	15.9	16.2	16.6	15.6	15.9	16.1	16.4	16.8
	12H	15.4	15.6	15.8	16.1	16.5	15.6	15.8	16.0	16.3	16.7
12H	4H	15.4	15.8	15.8	16.2	16.5	15.6	16.0	16.0	16.3	16.7
	6H	15.4	15.7	15.9	16.2	16.6	15.6	15.9	16.1	16.4	16.8
	8H	15.4	15.6	15.8	16.1	16.6	15.6	15.8	16.0	16.3	16.8
Variations with the observer position at spacings:											
S = 1.0H	+ 0.6 / - 0.8					+ 0.6 / - 0.8					
1.5H	+ 0.8 / - 0.6					+ 0.7 / - 0.6					
2.0H	+ 0.8 / - 1.1					+ 0.8 / - 1.0					

CIE Pub.117, 523.8 lm Total Lamp Luminous Flux Correct (8log(F/F0) = -2.2)

C Range: 0 - 360DEG  
C Interval: 15.0DEG  
Test Speed: HIGH  
Temperature:25.3DEG  
Operators:AE  
Test Date:2020-06-16

γ Range: 0 - 90DEG  
γ Interval: 1.0DEG  
Test System:EVERFINE GO-2000B\_V1 SYSTEM V2.0.362  
Humidity:65.0%  
Test Distance:7.240m [K=1.0000]  
Remarks:

### UTILIZATION FACTORS TABLE

Test:U:225.1V I:0.0310A P:6.280W PF:0.8830 Freq:50.00Hz Lamp Flux:523.795x1 lm		
NAME: ALSP35-6G30-F	TYPE:	WEIGHT:
SPEC.:	DIM.:	SERIAL No.:
MFR.:	SUR.:28	Shielding Angle:

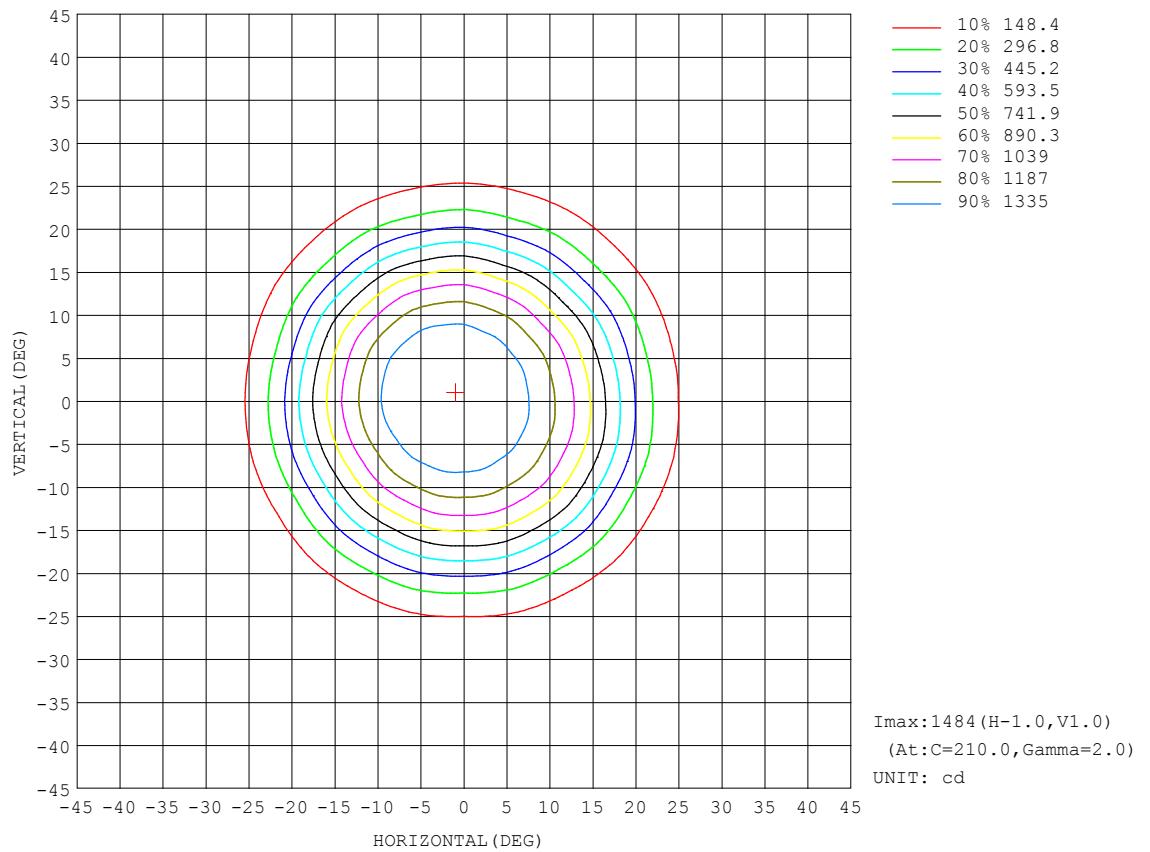
REFLECTANCE										
Ceiling	0.8	0.8	0.8	0.7	0.7	0.7	0.5	0.5	0.5	0
Walls	0.7	0.5	0.3	0.7	0.5	0.3	0.7	0.5	0.3	0
Working plane	0.2	0.2	0.2	0.2	0.2	0.2	0.2	0.2	0.2	0
ROOM INDEX	UTILIZATION FACTORS (PERCENT) $k(RI) \times RCR = 5$									
$k = 0.60$	87	81	77	87	81	77	86	80	77	73
0.80	95	89	85	94	88	85	93	88	84	81
1.00	99	93	90	98	93	89	97	93	89	85
1.25	103	98	94	102	97	94	100	96	93	89
1.50	106	101	98	104	100	97	102	99	96	91
2.00	108	104	101	107	103	100	104	101	99	93
2.50	110	106	103	108	105	102	105	103	100	94
3.00	112	108	105	110	107	104	107	104	102	96
4.00	114	111	109	112	109	107	108	106	105	98
5.00	115	113	111	113	111	109	109	108	106	99
ROOM INDEX	UF (total)									Direct
According to DIN EN 13032-2 2004			Suspended					SHRNOM = 1.25		

C Range: 0 - 360DEG  
C Interval: 15.0DEG  
Test Speed: HIGH  
Temperature:25.3DEG  
Operators:AE  
Test Date:2020-06-16

$\gamma$  Range: 0 - 90DEG  
 $\gamma$  Interval: 1.0DEG  
Test System:EVERFINE GO-2000B\_V1 SYSTEM V2.0.362  
Humidity:65.0%  
Test Distance:7.240m [K=1.0000]  
Remarks:

## ISOCANDELA DIAGRAM

Test:U:225.1V I:0.0310A P:6.280W PF:0.8830 Freq:50.00Hz Lamp Flux:523.795x1 lm		
NAME: ALSP35-6G30-F	TYPE:	WEIGHT:
SPEC.:	DIM.:	SERIAL No.:
MFR.:	SUR.:28	Shielding Angle:



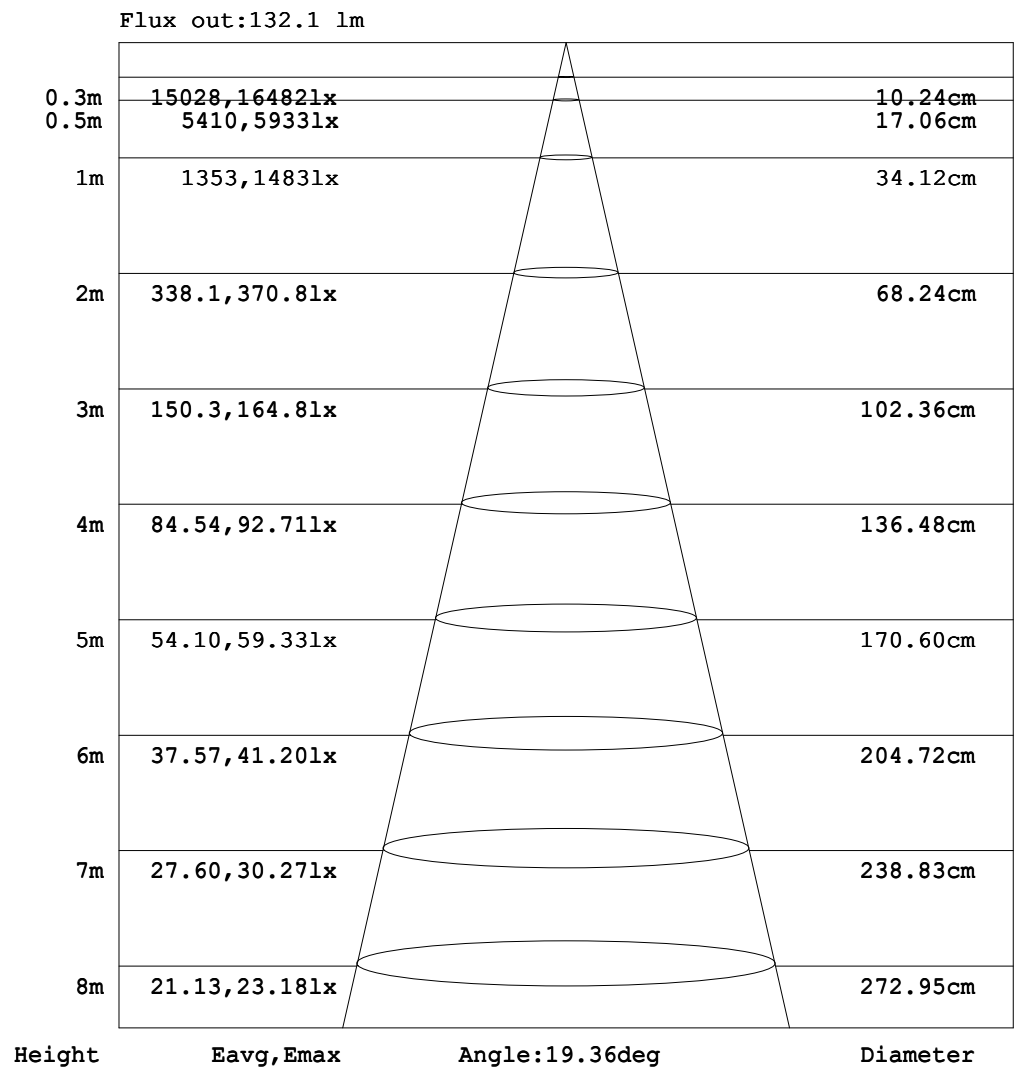
C Range: 0 - 360DEG  
C Interval: 15.0DEG  
Test Speed: HIGH  
Temperature:25.3DEG  
Operators:AE  
Test Date:2020-06-16

$\gamma$  Range: 0 - 90DEG  
 $\gamma$  Interval: 1.0DEG  
Test System:EVERFINE GO-2000B\_V1 SYSTEM V2.0.362  
Humidity:65.0%  
Test Distance:7.240m [K=1.0000]  
Remarks:



### AAI Figure

Test:U:225.1V I:0.0310A P:6.280W PF:0.8830 Freq:50.00Hz Lamp Flux:523.795x1 lm		
NAME: ALSP35-6G30-F	TYPE:	WEIGHT:
SPEC.:	DIM.:	SERIAL No.:
MFR.:	SUR.:28	Shielding Angle:



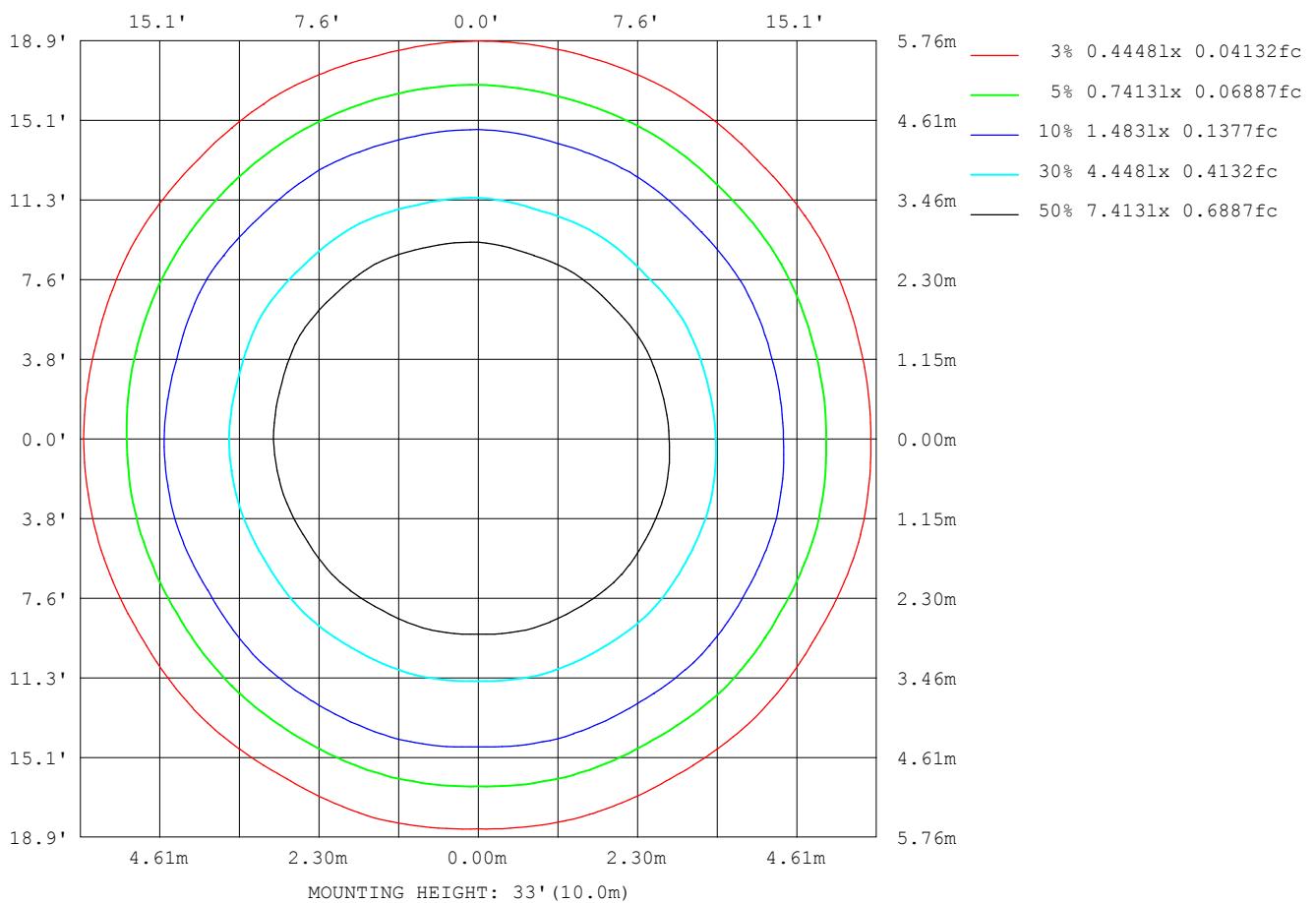
Note:The Curves indicate the illuminated area and the average illumination when the luminaire is at different distance.

C Range: 0 - 360DEG  
C Interval: 15.0DEG  
Test Speed: HIGH  
Temperature:25.3DEG  
Operators:AE  
Test Date:2020-06-16

γ Range: 0 - 90DEG  
γ Interval: 1.0DEG  
Test System:EVERFINE GO-2000B\_V1 SYSTEM V2.0.362  
Humidity:65.0%  
Test Distance:7.240m [K=1.0000]  
Remarks:

### ISOLUX DIAGRAM

Test:U:225.1V I:0.0310A P:6.280W PF:0.8830 Freq:50.00Hz Lamp Flux:523.795x1 lm		
NAME: ALSP35-6G30-F	TYPE:	WEIGHT:
SPEC.:	DIM.:	SERIAL No.:
MFR.:	SUR.:28	Shielding Angle:



C Range: 0 - 360DEG  
 C Interval: 15.0DEG  
 Test Speed: HIGH  
 Temperature:25.3DEG  
 Operators:AE  
 Test Date:2020-06-16

γ Range: 0 - 90DEG  
 γ Interval: 1.0DEG  
 Test System:EVERFINE GO-2000B\_V1 SYSTEM V2.0.362  
 Humidity:65.0%  
 Test Distance:7.240m [K=1.0000]  
 Remarks:

## LED Avg.L Report

Test:U:225.1V I:0.0310A P:6.280W PF:0.8830 Freq:50.00Hz Lamp Flux:523.795x1 lm		
NAME: ALSP35-6G30-F	TYPE:	WEIGHT:
SPEC.:	DIM.:	SERIAL No.:
MFR.:	SUR.:28	Shielding Angle:

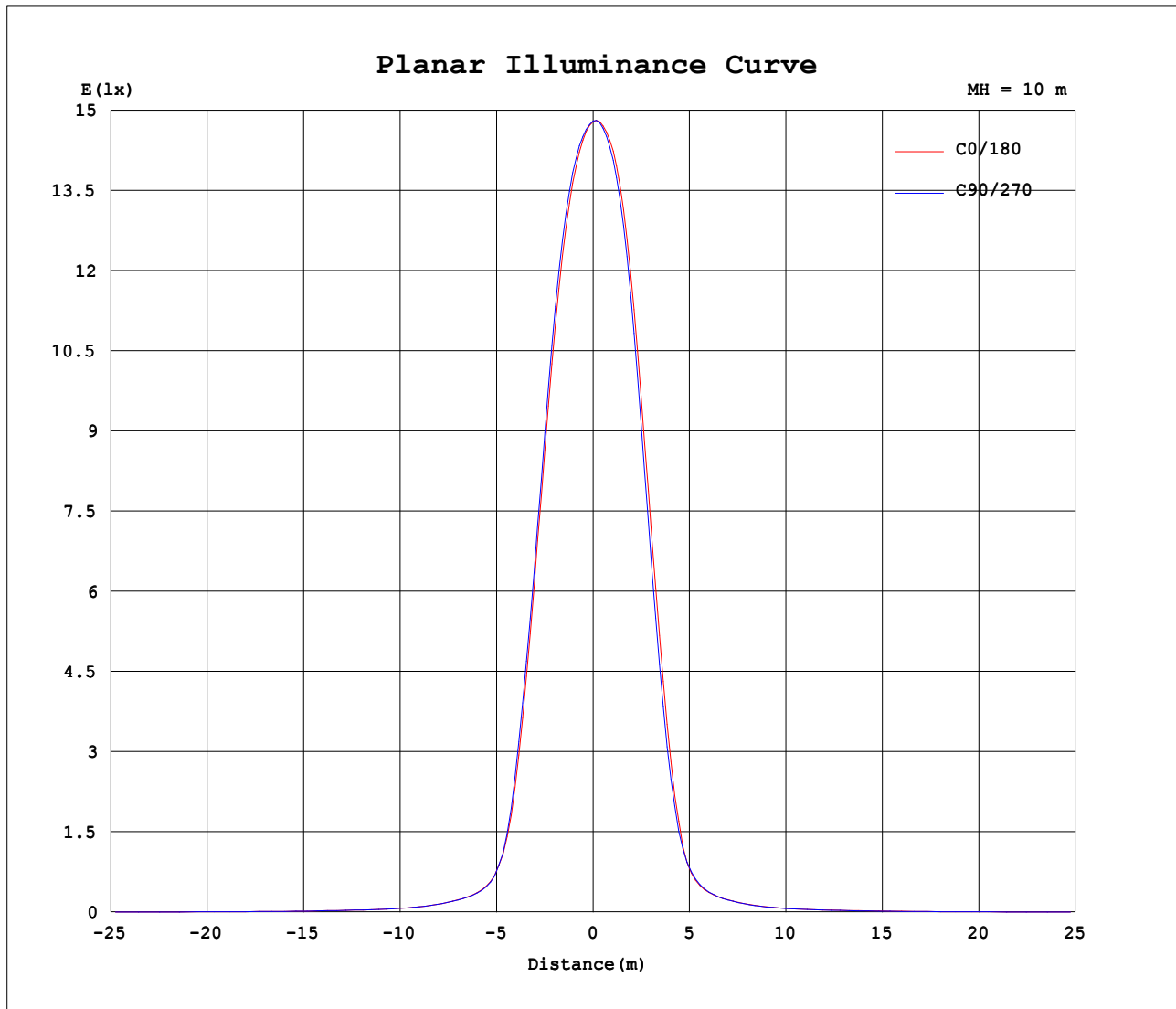
AvgL	cd/m2
L_0~180 (65) av	3390
L_0~180 (75) av	1866
L_0~180 (85) av	112
L_90~270 (65) av	3368
L_90~270 (75) av	1880
L_90~270 (85) av	127
L_45 (65) av	3408
L_45 (75) av	1881
L_45 (85) av	74

Standard: GB/T 29293-2012

C Range: 0 - 360DEG  
 C Interval: 15.0DEG  
 Test Speed: HIGH  
 Temperature:25.3DEG  
 Operators:AE  
 Test Date:2020-06-16

γ Range: 0 - 90DEG  
 γ Interval: 1.0DEG  
 Test System:EVERFINE GO-2000B\_V1 SYSTEM V2.0.362  
 Humidity:65.0%  
 Test Distance:7.240m [K=1.0000]  
 Remarks:

## Planar Illuminance Curve



C Range: 0 - 360DEG  
C Interval: 15.0DEG  
Test Speed: HIGH  
Temperature: 25.3DEG  
Operators: AE  
Test Date: 2020-06-16

$\gamma$  Range: 0 - 90DEG  
 $\gamma$  Interval: 1.0DEG  
Test System: EVERFINE GO-2000B\_V1 SYSTEM V2.0.362  
Humidity: 65.0%  
Test Distance: 7.240m [K=1.0000]  
Remarks:

```

γ Range: 0 - 90DEG
γ Interval: 1.0DEG
Test System:EVERFINE GO-2000B_V1 SYSTEM V2.0.362
Humidity:65.0%
Test Distance:7.240m [K=1.0000]
Remarks:

```

```

γ Range: 0 - 90DEG
γ Interval: 1.0DEG
Test System:EVERFINE GO-2000B_V1 SYSTEM V2.0.362
Humidity:65.0%
Test Distance:7.240m [K=1.0000]
Remarks:

```